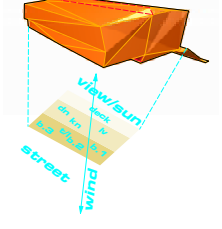
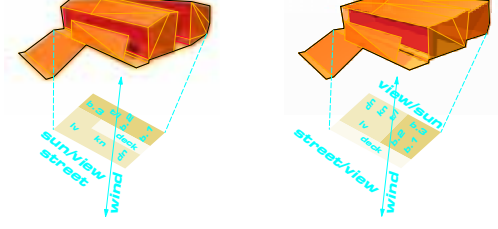
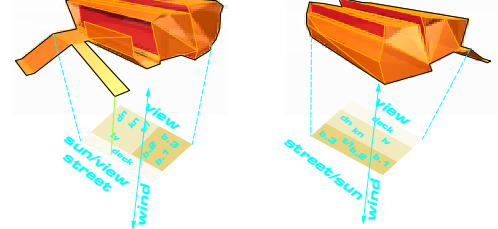


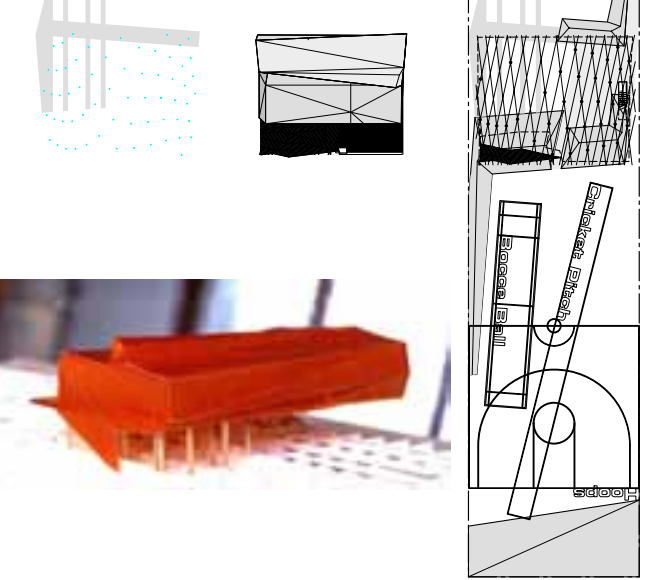
Orientation Options

Not to Scale



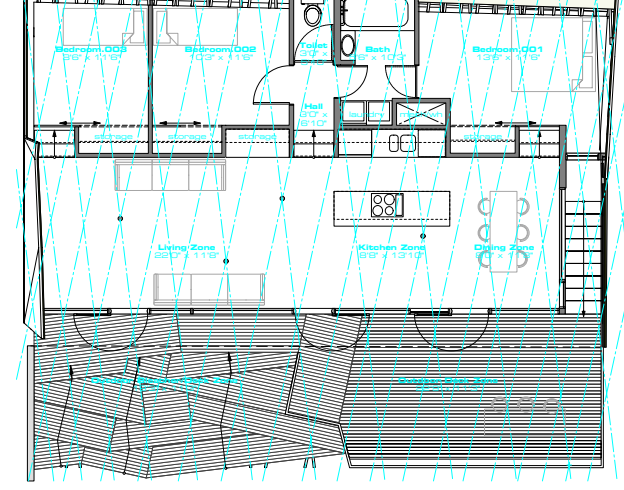
Intersection Plan, Roof Plan and Undercroft/Site Plan

Scale: 1/16" = 1'-0"



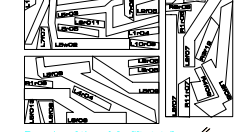
Floor Plan

Scale: 1/32" = 1'-0"



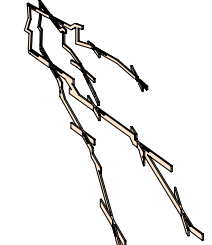
Rib Construction Diagram

Not to Scale



Examples of three of a fifty total 12x12x24mm plywood sheets with recessed structural ribs to be laser cut.

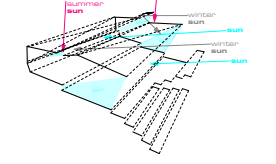
Detail of typical intersection between structural ribs showing steel joint.



Example of two full or twenty-five total showing typical intersection between structural ribs with steel joint.

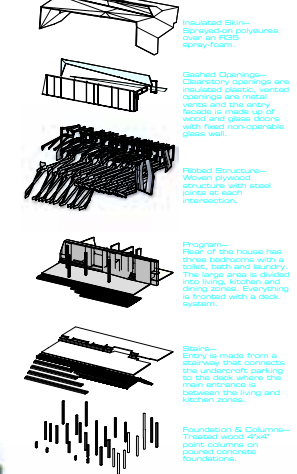
Passive Solar Rezone Diagram

Not to Scale



Exploded Axonometric Systems Diagram

Not to Scale



Insulated Skin—Spray-on polyurethanes over an R30 spray-foam.

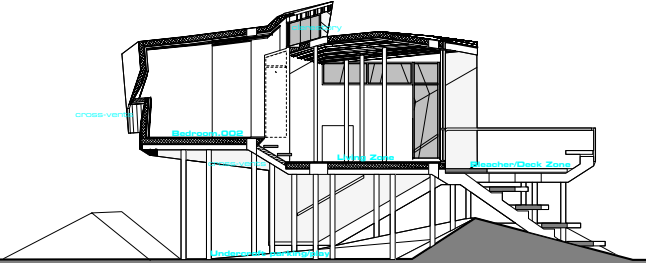
Glazed Openings—Clear-story openings are recessed plastic, vented coverings and the epoxy facade is made up of wood and glass slabs with fixed non-operable glass walls.

Ribbed Structure—Woven plywood structure with steel joints at each intersection.

Program—Rear of the house has three bedrooms with a closet, bath and laundry. The large area is divided into living, kitchen and dining zones. Everything is fronted with a deck system.

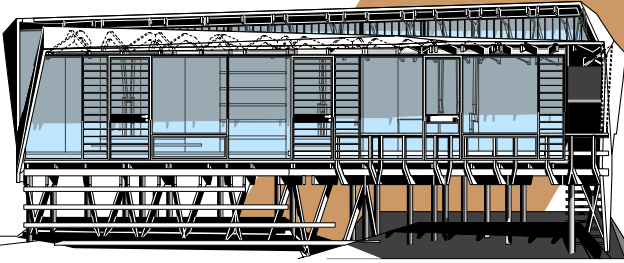
Entry—Entry is made from a side-way that connects the undercroft parking to the deck where the main entrance is between the living and kitchen zones.

Foundation & Columns—Treated wood steel joist, poured concrete foundations.



Detail CrossSection

Scale: 1/2" = 1'-0"



Sun/View Elevation

Scale: 1/2" = 1'-0"

SECCA

Architectural Center for Contemporary Art

HOME:

House Project Design Innovation

